



# Air & Sea Travel Center

Phone: (808) 951-9800

E-mail: [info@airseatvl.com](mailto:info@airseatvl.com)

[www.airseatvl.com](http://www.airseatvl.com)

50 S. Beretania Street, Suite C - 211B, Honolulu, HI 96813

## BACK TO OKINAWA: A SECOND ADVENTURE

Cities covered: Naha, Motobu, Kouri Island, and Yomitan

Traveling Dates: Oct 11 - 20, 2026 (10 Days)

Price per person

**\$3,888**

Incl. Tax & Fuel Surcharge

Single Supp: \$ 760



Ocean Expo Park

### Tour Package Includes:



JAPAN AIRLINES

- \* International Flight from HONOLULU
- \* Deluxe Hotel Accommodations
- \* Admissions and Meals as Stated
- \* UNESCO World Heritage Site: Shuri Castle
- \* Ocean Expo Park & Peace Memorial Museum
- \* Gyokusendo Cave at Okinawa World
- \* Awamori Liquor Tasting
- \* Hand-Weaving Experience
  - Ryukyu Bingata Dyeing
  - Shisa Painting
- \* Local Specialty Meals
- \* Gratuity for Local Tour Guides & Drivers

**FREE**  
Use of  
Wireless  
Tour Guide System



Gyokusendo Cave



Shuri Castle

**Day 1 \*\* Oct 11****Honolulu → Haneda**

We begin our journey by boarding an international flight to Okinawa Naha Airport via Haneda. Meals and snacks will be served on the plane.

**Day 2 \*\* Oct 12****Haneda → Naha**

**Okinawa**, known as Ryukyu historically is situated between Taiwan and Kyushu. This popular vacation destination is famous for its natural beauty, including its blue skies, sunshine, ocean, endless coastline, red hibiscus blossoms, and a unique landscape that is a fascinating combination of Chinese and Japanese cultures. Upon arrival in Okinawa Naha Airport, our representative will escort us to our hotel.

**Day 3 \*\* Oct 13****Naha****( B )**

After breakfast, we will visit **Shuri Castle**, a UNESCO World Heritage Site. This castle was the palace of the Ryūkyū Kingdom and served as the cultural center of the Ryukyu Islands until 1879. It was nearly destroyed in 1945 during the Battle of Okinawa. In 1992, it was reconstructed on the original site using photographs, historical records, and collective memory. Visitors may be surprised by the unique architecture of the castle, which differs significantly from other Japanese castles. Okinawa is known as the "Island of Crafts," with 16 crafts designated as "traditional crafts" by the government, 13 of which focus on dyeing and weaving. Today, we will participate in a **Ryukyu Bingata Dyeing Experience**, where we can colorfully dye tote bags with traditional Okinawan patterns. This program allows you to casually experience traditional Okinawan techniques under the guidance of a skilled craftsman. After that, we will return to our hotel and enjoy the rest of day on our own.

**Day 4 \*\* Oct 14****Naha****( B, L )**

After breakfast, we will visit the **Peace Memorial Park**. Its main attraction is the **Peace Memorial Museum**, which gives an overview of the battle and the reconstruction of the island. Other notable sites include the **Clock Tower, the Path to Peace Hill**, and the **Cornerstone of Peace**. After lunch, we will go to **Gyokusendo Cave at Okinawa World Park**. The primary Gyokusendo Cave was discovered in 1967 and it is one of the largest underground stalactite caves in the Far East. Besides being one of the most popular tourist destinations in Okinawa, it has also been used as a film location for various movies. The best-known movie internationally is the 1974 monster classic **Godzilla vs Mecha Godzilla**. Within the park, there is a snake museum, Sانشin making, and glass blowing. The main attraction is the dynamic and colorful **Eisa Dance (Traditional Okinawan Taiko Dance)** in the outdoor auditorium. After that, we will return to our hotel in Naha.

**Day 5 \*\* Oct 15****Naha — Motobu****( B, L )**

After breakfast, we will visit **Ryukyu Mura**, an authentic re-creation of an ancient Okinawan village. Old Ryukyuan homes were brought from across the islands and reassembled here to preserve the heritage of the Ryukyu Kingdom. The park was created with the hope that this unique heritage could be shared with all who visit. Some of the staff wear traditional Okinawan folk costumes, providing excellent photo opportunities. We can join the **Michijune (Parade)** to dance "Kachashi," a form of festive Ryukyuan folk dance. After lunch, we will visit **Cape Manzamo**, a scenic rock formation on Okinawa Island. Cape Manzamo is one of the island's most celebrated and visited natural landmarks, famed for its dramatic limestone cliffs, panoramic ocean views, and historical significance. It is a must-see destination that draws tourists from across Japan and around the world. Tonight, we will check in to our hotel in Motobu and enjoy dinner on our own.

**Day 6 \*\* Oct 16****Motobu****( B )**

After breakfast, our excursion is set to **Churaumi Aquarium** (Okinawa Churaumi Suizokukan), located within the **Ocean Expo Park**. It is one of the world's largest aquariums that will dazzle you with the exotic tropical fish, manta rays, sharks, and whale sharks. The park also offers dolphin shows at the outdoor Okichan Theater. After a full day tour, we will return to our hotel.

**Day 7 \*\* Oct 17****Motobu — Yagaji Island — Kouri Island — Motobu****( B, L )**

After breakfast, we will visit the tranquil **Island of Yagaji**, located off the Motobu Peninsula. It is connected to the main island by Warumi Bridge on the western side and Yagaji Bridge in the south, which links it to Ojima Island. The island's interior features a patchwork of forests and sugarcane fields, while the coast is lined with mangroves and small beaches. Next, we will drive across the bridge to **Kouri Island**, a small, circular island with a radius of just one kilometer. It is accessible by car via Kouri Bridge on the southern side of the island. After lunch, we will visit **Kouri Ocean Tower**, which offers the best views on the island. From here, we can gaze out across the ocean and view Kouri Bridge as it stretches back toward the main island. The tower also houses a **Sea-shell museum** with a collection of more than 10,000 shells from around the world. Feel free to browse the exhibits or pick up a shell-crafted souvenir from the gift shop. After that, we will return to our hotel in Motobu and enjoy dinner on our own.

**Day 8 \*\* Oct 18****Motobu — Yomitan — Naha****( B, D )**

After breakfast, we will transfer to **Murasaki Mura** in Yomitan. Murasaki Mura is a theme park that reproduces Naha City during the 14th and 15th centuries, when Okinawa, then known as the Ryukyu Kingdom. The park offers 32 workshops where visitors can try their hand at Okinawan Shisa painting, ceramics, Ryukyu glass blowing, making coral wind chimes or dyeing cloth. **Shisa painting** is a traditional Ryukyuan cultural artifact and decoration, often seen in similar pairs, resembling a cross between a lion and a dog from Okinawan mythology. Today, we will make our own Shisa to bring home as a souvenir (Omiyage). One of Okinawa's most famous products is its **Hard Liquor, Awamori**. It is distilled from rice, considerably more potent and less sweet than sake; not found on the mainland and only brewed here. Some varieties made offshore of Okinawa Main Island have the highest alcoholic content. Awamori has a venerable history going back 500 years, when the Ryukyu Kingdom had extensive trade with Southeast Asia. It was first introduced to the islands from Thailand. Awamori is still made from Thai rice because its long grains give a higher alcoholic yield and it is not as sticky as Japanese rice. We will sample some Awamori at **Masahiro Awamori Factory**. The devastating effects of the war had a profound impact on the Okinawans, and there are a number of monuments and museums relating to that period throughout Okinawa Island. Tonight's **Farewell Dinner** features **Okinawan Palace Cuisine**. During the reign of the Ryukyu monarchs, when the kingdom flourished through trade with surrounding Asian countries, elaborate feasts were hosted nightly for visiting envoys. Carefully selected ingredients are painstakingly prepared, with the resulting fare as delightful to the eye as it is to the palate.

**Day 9 \*\* Oct 19****Naha****( B )**

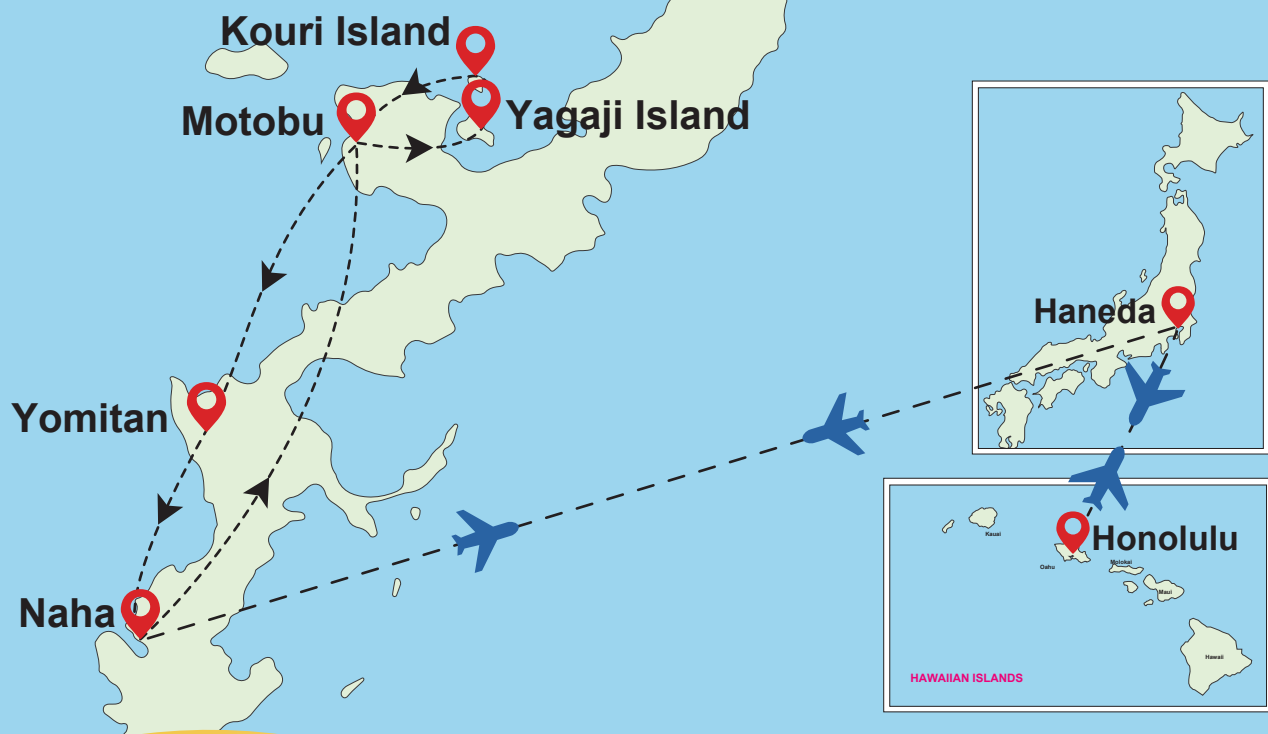
After breakfast, we can enjoy a free day to shop around the city and eat whatever looks interesting.

**Day 10 \*\* Oct 20****Naha → Haneda → Honolulu****( B )**

After breakfast, enjoy your last-minute shopping in Naha. We will transfer to the airport for our return flight to Honolulu via in the afternoon. This will end our fantastic trip to Okinawa.

*We wish you a safe journey and many wonderful memories to share with family and friends!* ☺

**B: Breakfast | L: Lunch | D: Dinner**



### **Remarks:**

- ✦ Fares are per person, USD based on double occupancy and include all airline taxes and fees
- ✦ Business class is available, please call your agent for price
- ✦ Refer to "General Condition of Air & Sea"
- ✦ We reserve the right to modify the itinerary to ensure smooth operation
- ✦ Tour price is subject to change according to any airfare increase, increase in government taxes, additional fuel charges and fluctuation of the rate of exchange between U.S. and foreign currency
- ✦ Tour price includes fuel surcharge & government taxes and fees. The tour price shown is current at time of listing and pricing on Mar 16, 2026
- ✦ Escorted tour with a minimum of 20 passengers
- ✦ Gratuity for Local Tour Guides & Drivers is included
- ✦ It is mandatory to inform Air and Sea Travel of any existing conditions that may require medical attention or accommodations during the trip. You need to provide this information in writing in the Tour Supplemental Information section of the application. If you do not have a travel companion who can help you with your special needs, you need to talk to your agent to determine if this is an appropriate tour for you. Some tours may be too strenuous depending on your condition. Air and Sea Travel reserves the right to reject or cancel your booking. You are responsible for any cancellation penalty that this may incur.
- ✦ All travelers, regardless of COVID-19 vaccination status, are welcome to travel with us and will no longer be required to provide proof of pre-departure testing, except for specific countries where COVID-19 vaccination, testing, or additional documentation are required by law. Please visit or revisit the government site to verify the travel requirements. Fully vaccinated are recommended. Vaccines combined with multi-layered preventative health and safety measures will help us provide a safe and healthy vacation environment.
- ✦ As government regulations evolve, our health and safety protocols will evolve as needed to ensure compliance. This may mean different protocols from state to state and city to city based on local requirements.

### **Payment Policy:**

**CHECK OR CASH PAYMENT ONLY.** A deposit of \$350 per person is required at the time of application. The balance is due on **Jul 2, 2026**. In the event balance payment is not made within the required time period, Air and Sea Travel Center reserves the right to cancel reservations and charge a service fee for cancellation.

### **Cancellation Policy:**

**Written notice is required for any cancellation. The cancellation fee will be as follow:**

- \*\* **Jul 3 to Aug 17, 2026**, **50%** of total price plus any other service fee caused by the cancellation;
- \*\* **From Aug 18, 2026 to departure** or withdrawing during the tour shall be regarded as willingly giving up all rights concerned, **100%** of total price, and request for other services as a substitute shall not be accepted.

**\*\*We strongly recommend purchasing travel insurance when you make a reservation\*\***